



E200

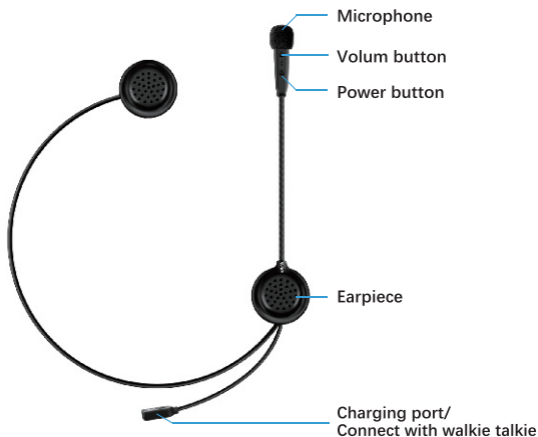
User Manual



EJEAS®



www.ejeas.com



| | |
|---------------------|--|
| Volum button | Electricity prompt, Answer/Reject incoming calls, Hang up call, Last Code Redial |
| | Music play / pause, Last Music, Music stop |
| | Set up intercom, Exit Talkback |
| Power button | Call volume adjustment, Voice dialing |
| | Music volume adjustment, Next music |
| | Talkback volume adjustment |

Operation method:

- 1、 Power On:** Long Press power button 3 seconds, device light shine then headset have invoice tip of "power on".
- 2、 Power off :** Shortly press power button+volume 0.3s, power off quickly.
- 3、 pairing with mobile :** Power off situation , long press "power button" 6 seconds until red & blue light shining , voice tip and open mobile bluetooth , search E200 , press connection with mobile ,then pairing successfully .First pairing successfully ,

next time ,don't need connect again , using it and auto-connecting mobile, or unconnected and standby, shortly "volume button" , E200 automatic connect paired mobile.

4.Connect mobile again :power on and automatic connect , if Connected successfully has voice tip ,if unconnect,press volume button shortly .(In the case of the phone has been paired with the second use)

5.Electricity prompt: in the shutdown state, press the power button to start power prompt.

6.Phone control:

Answer incoming calls: incoming calls automatically (8s later) or call short press start key.

Reject call: call status, double-click the power button.

Hang up call: call state, short press the power button.

Call volume adjustment: long press the volume key to adjust the volume.

Last Code Redial: Double-click the power button.

Voice dialing: connection standby, double-click the volume key.

7.Music control:

Music play / pause: long press the power button 1s.

Music volume adjustment: long press the volume key to adjust to the maximum sound, tone tip within 3 seconds to maintain the maximum sound , and then go to the minimum.

Music Up and down: Double-click the power button/double-click the volume button.

Music stop: long press the power button 1s.

8.pairing &talking:

2pcs E200 connect and talk ,must be paired then talk , 2pcs E200 pair and talk , power on ,long press volume button 2 seconds , red&blue shine ,then shortly press one of E200 "VOLUME BUTTON". E200 automatic search and pair ,only blue light shine of 2 pcs E200 when paired successfully ,voice tip of pairing successfully .

Same 2pcs E200 paired successfully would never be paired again ,just need shortly power button .

9.Talkback control:

Set up intercom: short press the power button

Talkback volume adjustment: long press the volume button to cycle adjust To adjust to the maximum sound , the tone within 3 seconds to maintain the maximum sound, and then go to the minimum , if the maximum ,then release after the sound, then press the volume key to the minimum volume .

Exit Talkback: Short press the power button.

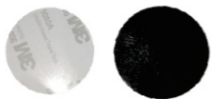
AUX Voice input

Connet with normal walkie talkie through
PPT line (Optional)



Installation:





1

Remove the white protect film on the velcro.



2

Put the velcro to the both side of helmet.



3

Gule the both speaker on the velcro,adjust the position.



4

Wear up and check it comfortable.

5

Accessories:



Accessories:E200+USB line+Users manual+Velcro*2

